

Paintertainment

e-Newsletter • September 2015 • Issue 37

CROWD CONTROL

If you've been face painting for even a short amount of time, chances are you've been swallowed up by the crowd at least once. You've literally felt the breath of onlookers on your neck, had your table bumped countless times, and have been asked "where's the line?" by endless parents. Time to employ some crowd control tactics.

Crowd control is all about providing order, and in turn, comfort for you and less confusion for the party guests. Standing in a "blob" of people and trying to keep track of who's next is just as frustrating for parents as being engulfed by said blob is for you. Parents are having a hard enough time keeping track of their rambunctious kiddos, so if you can put out some visual cues that are as obvious to the kids as they are to the parents, it's a win for everyone!

The phot below shows some ways that I have been able to successfully mold that blob into a line, and even manage to give myself a little breathing room! By defining the start and end point of the line, the artist's area, and exit, I'm able to spend all of my time painting, rather than helping people form a line.

Defining your space is really important for reducing your own stress level, not to mention messy spills, damage to your kit or fingers of curious little passers-by. Besides creating a zone of personal space for yourself, it makes each child feel extra special that they are the only ones allowed in that space for their own one-on-one time to be painted. It gives the parent a chance to exhale and know that they can see their child among the crowd, set their purse down, park their stroller and enjoy the experience too.

Check out our blog for more in-depth information and links to some of the products I use, and descriptions of how I made my "next in line" mat and interchangeable signage! 🎨



"Exit Only" sign defines the exit, then later doubles as a "line CLOSED" sign.



Design menu also holds chain

The only guests allowed in the artists' space are those getting painted.



Floor mat defines where the line STOPS

Arrow sign defines where the line STARTS

Plastic chain defines where the line is ROUTED

What's News?



New Halloween Shop:

We've added many new Halloween products and gathered them all together in our new Halloween Shop for easy shopping!



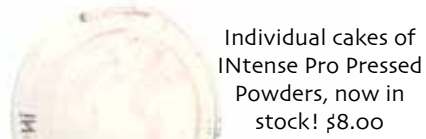
On the BLOG:

New posts comparing white brands, securing your tip jar, & more on crowd control!



Social Media BUZZ:

Win my new book, "Realism for Face & Body Artists!" Visit our Facebook page to learn how!



Individual cakes of Intense Pro Pressed Powders, now in stock! \$8.00



Mehron Extra Flesh \$5.00



Mehron Bruise Pro Color Wheel \$13.50

Free step-by-step
HOW-TO
from Paintertainment.com

FLAMES



September Coupon Code!

10%
off

Enter code **SPOOKY** at checkout. Shopping cart must total \$25 or more before shipping and taxes. One coupon code redemption per customer. Offer expires 09/30/15.